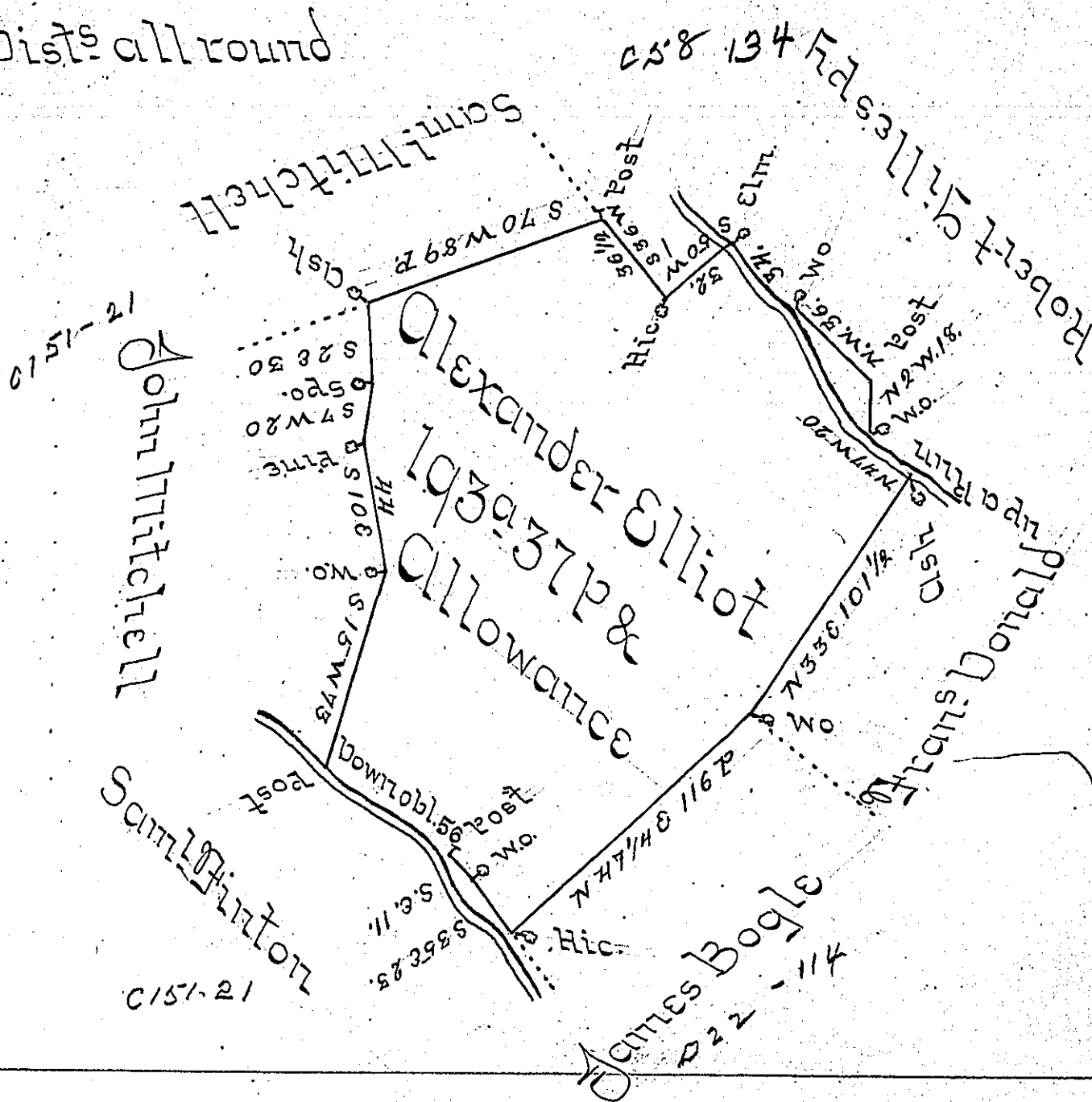


Courses & Dists all round

- S 70° W 89
- S 28 30
- S 7 W 20
- S 10 E 44
- S 15 W 73
- S 57 E 42
- S — E 25
- S 35 E 23
- N 47 1/4 E 116
- N 33 E 101 1/2
- N 47 W 20
- N 2 W 18
- N. W. 70
- S 50 W 32
- N 36 W 36 1/2



A Draft of a Tract of Land situate in Newton Township in the County of Cumberland Containing One hundred and Ninety three Acres and thirty seven perches and the Allowance of Six Percent for Roads &c. Surveyed January 5<sup>th</sup> 1790 in pursuance of a Warrant granted to Alexander Elliot bearing date the 21<sup>st</sup> Day of December 1789.

Matthew Henderson U.S.

To Daniel Brodhead Esquire }  
Surveyor General of Pennsylvania }

IN TESTIMONY that the above is a copy of the original remaining on file in the Department of Internal Affairs of Pennsylvania, made conformably to an Act of Assembly approved the 16th day of February, 1833, I have hereunto set my Hand and caused the Seal of said Department to be affixed at Harrisburg, this fifth day of August 1902.

*James W. Latta*  
Secretary of Internal Affairs.